

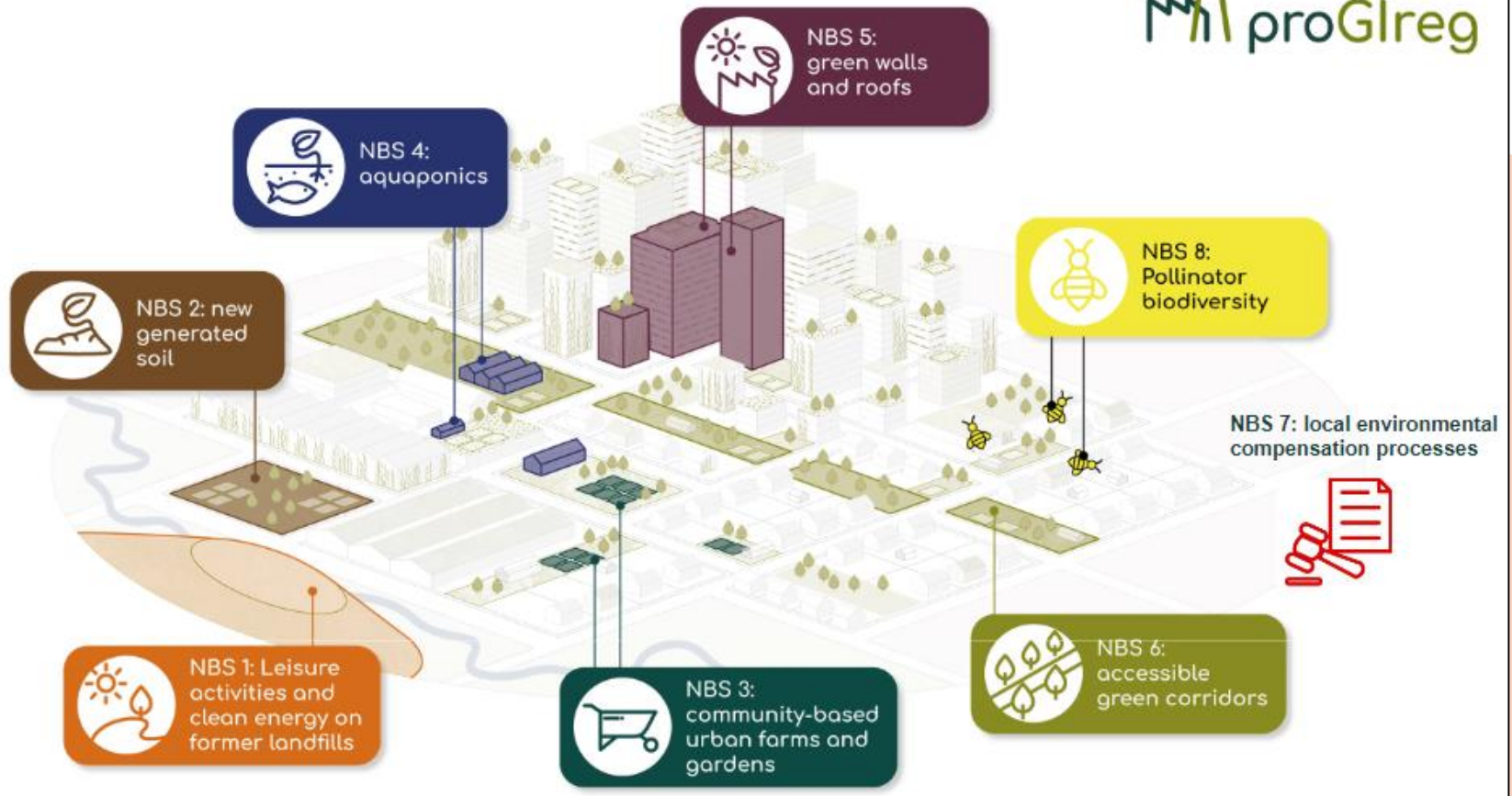
Upscaling in proGInet

Project in a nutshell



Project in a nutshell

8 cities & 8 NBS



Upscaling in proGInreg

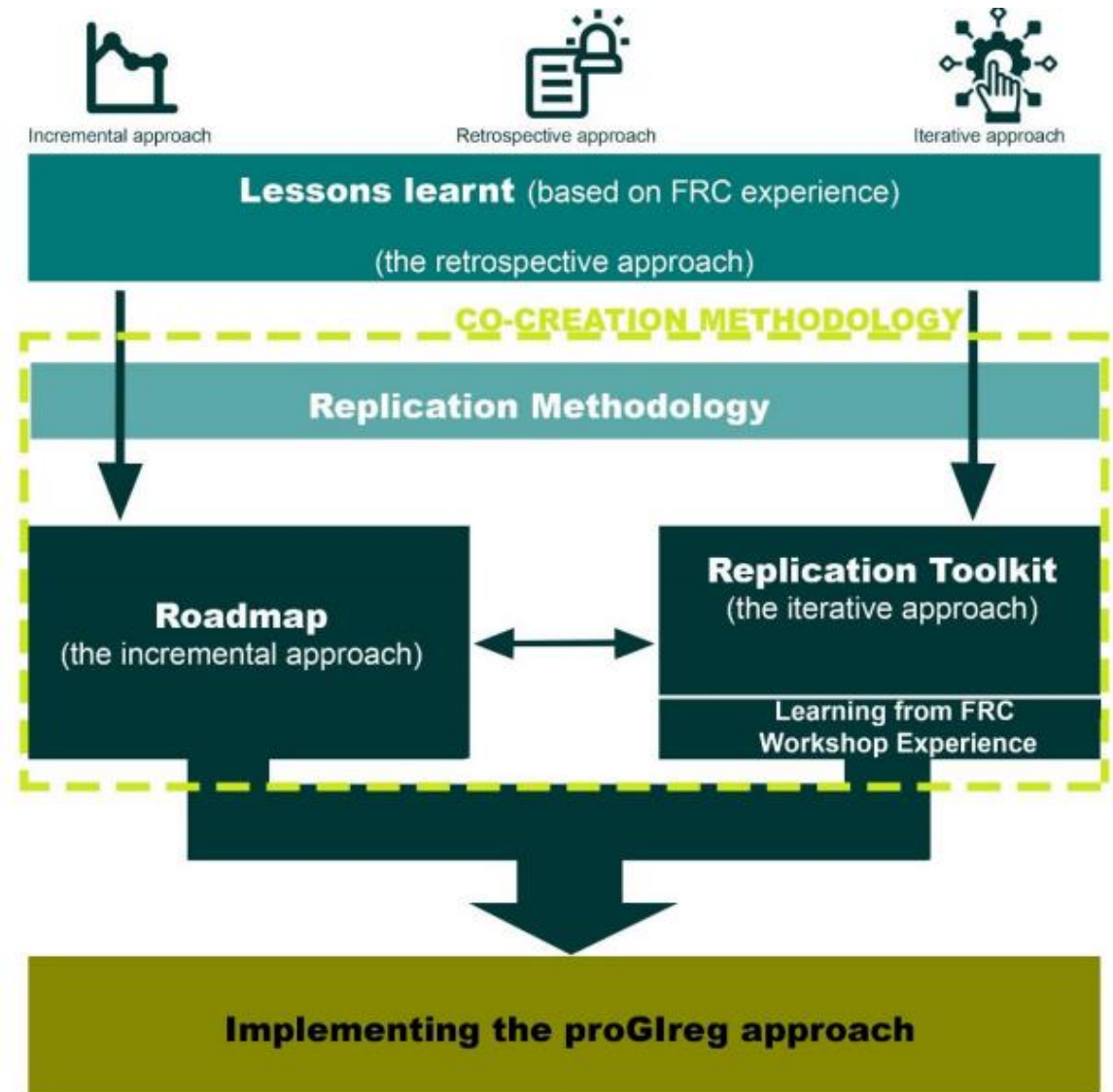


- 3 WPs dealing with upscaling
- 58 nominations in the GA
 - Upscaling from FRC to FC (WP2, RWTH)
 - Benefit assessment and monitoring (WP4, CNR)
 - Business models (WP5, SWUAS)
- Upscaling work still mainly ahead (2022/2023)

WP2: FRC → Follower Cities

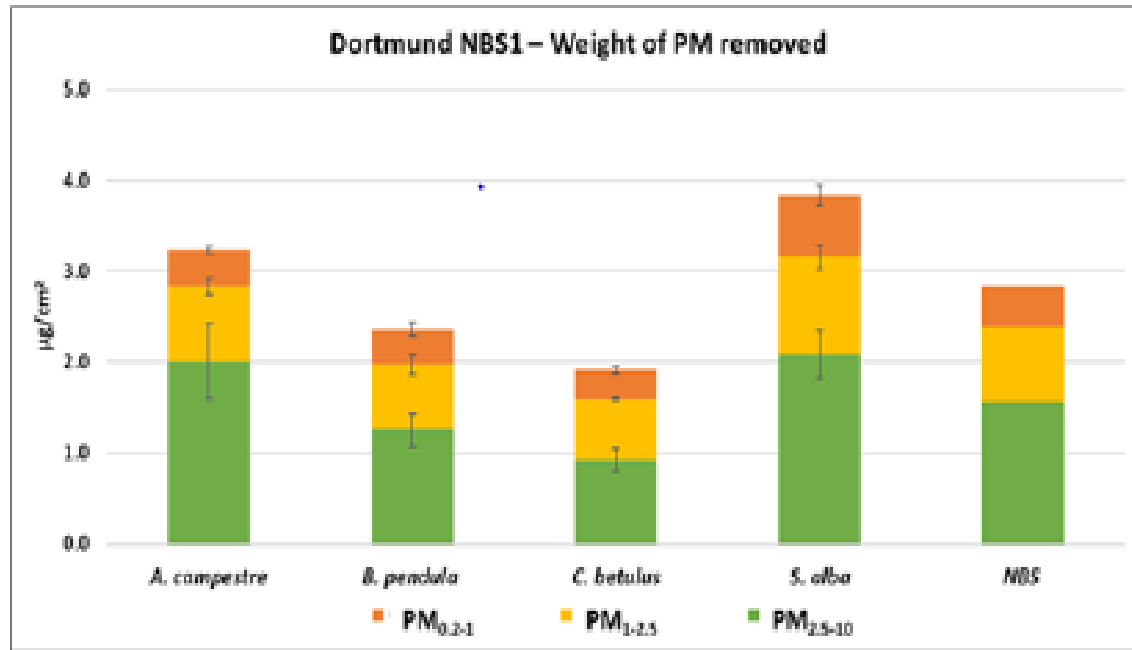
Goal:

- urban plans in FC
- for innovative NBS implementations



Benefit assessment

Upscale by
leaf area



1. Spatial: total leaf area of the vegetation at the NBS/LL/city level

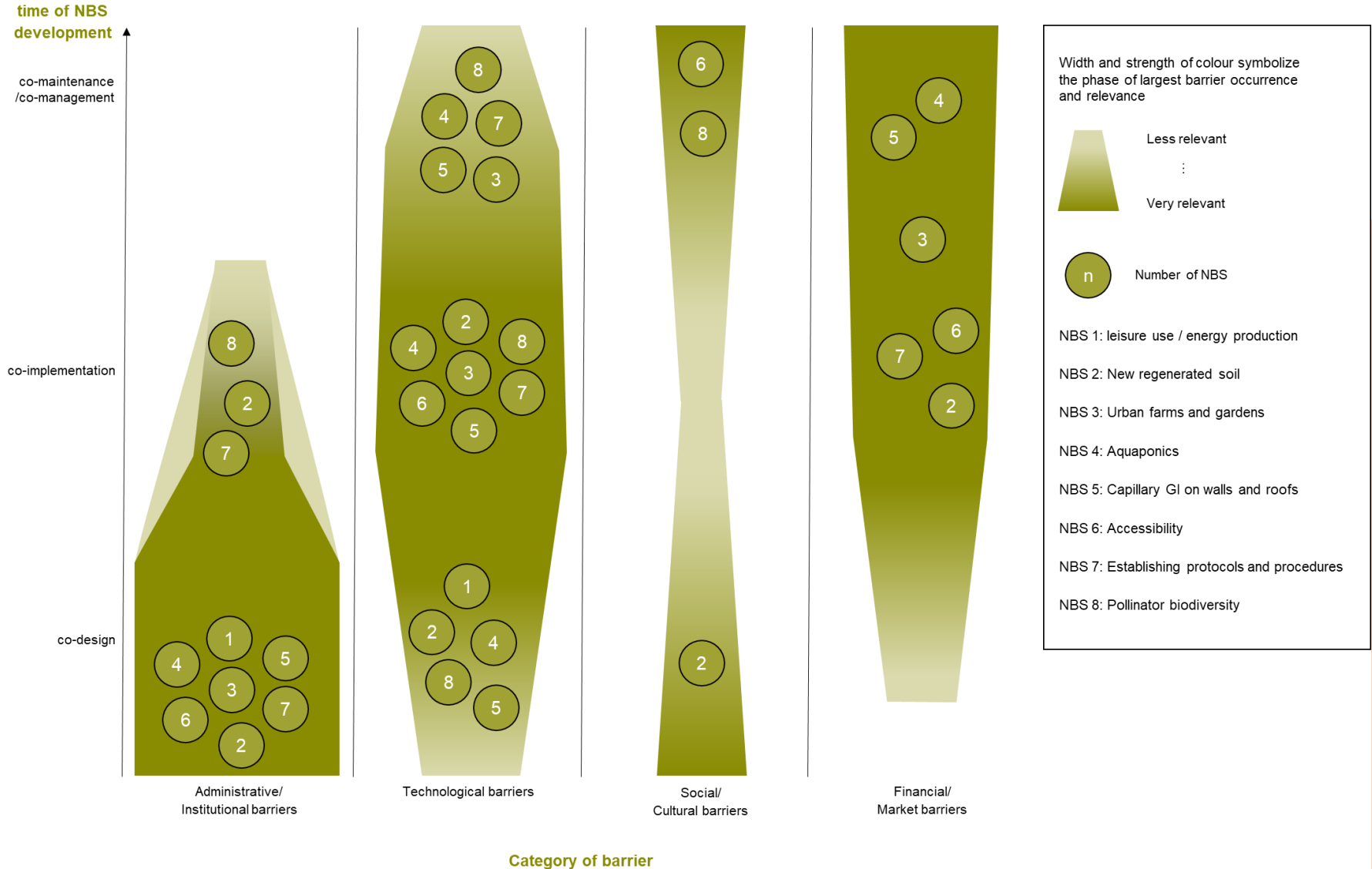
2. Temporal: growth rate of the vegetation

Figure 10. Weight of PM removed ($\mu\text{g cm}^{-2}$), as obtained from SEM/EDX, through the combination of PM density and chemical composition results. Results averaged over the four species are also reported as mean NBS values. Standard deviations are given for each size fraction and each species.

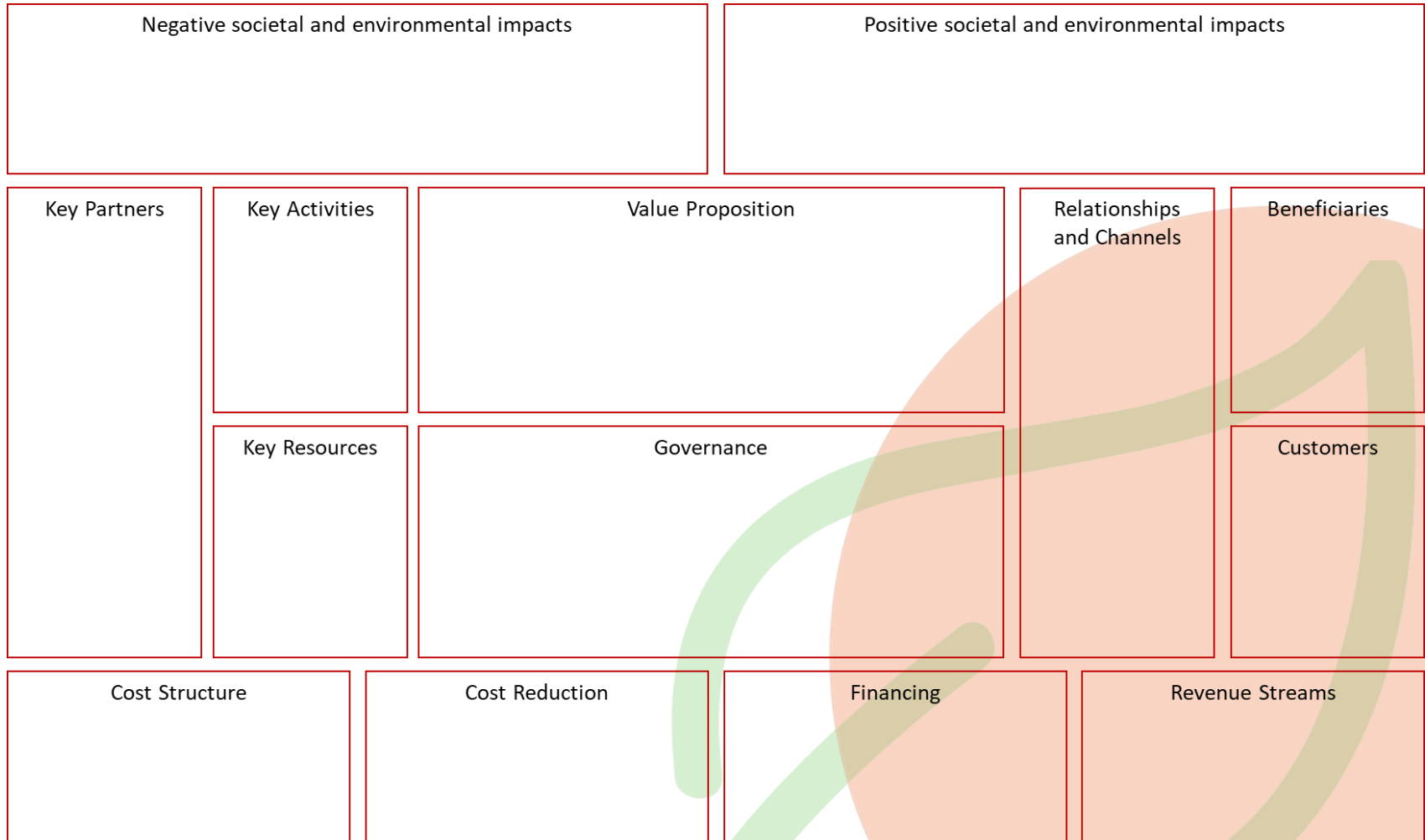
Benefit assessment

- crucial to continue with benefit assessment and monitoring after the project lifetime
- *“spatial and temporal upscaling of assessment”*
- *“cities should be able to monitor effectiveness of NBS also after the end of the project and when NBS are realized on large areas”*

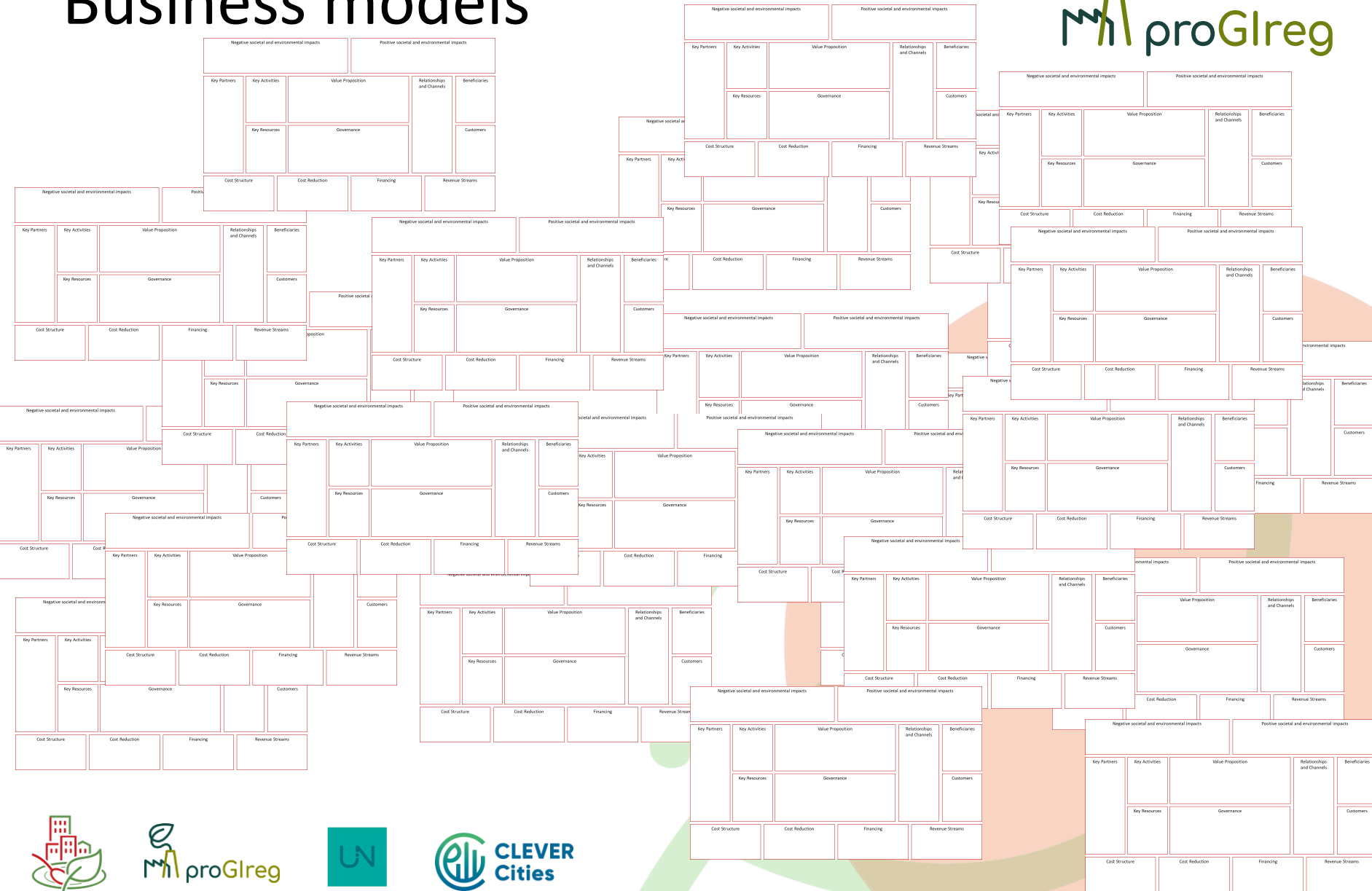
From barriers to upscaling



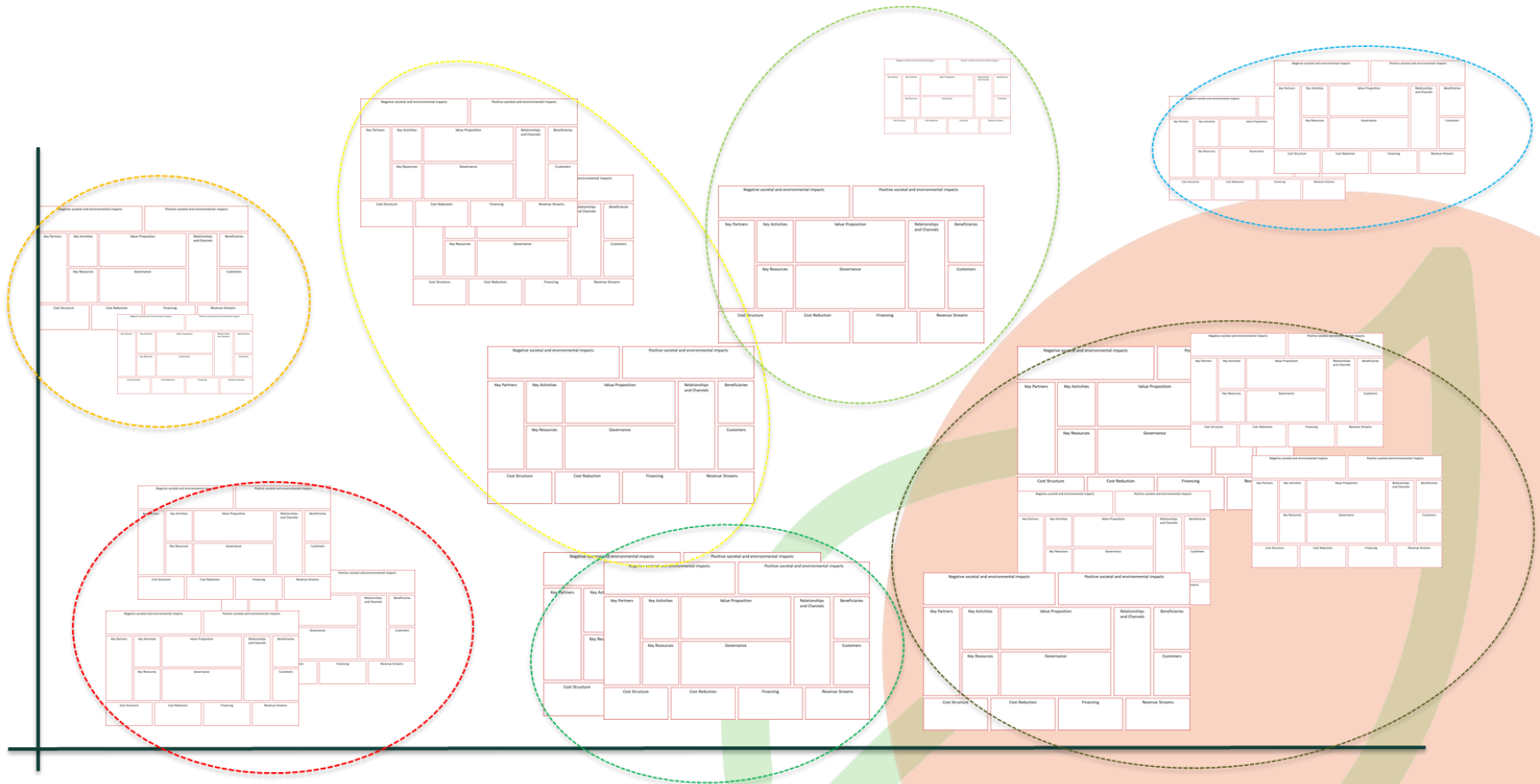
Business models



Business models



Business models



Upscaling in proGInreg



Table 1 Indicators for assessing the upscaling performance of sustainability experiments along different dimensions

Dimensions of upscaling of sustainability experiments	Empirical indicators
Quantitative	Number of beneficiaries/people
Organizational	Organizational growth, improvement in technical and managerial capacity, development of infrastructure and resources, development of knowledge base and management systems, diversifying funding sources and becoming financially self-sustainable, upgrading in the external value chain, dissemination of knowledge and ideas, research and development activities
Geographical	Expansion to new geographical locations (local communities, villages, municipalities, cities, states, and countries)
Deep	Reaching extremely poor and vulnerable sections of the population, and/or greater impact in the same location where the enterprise was started
Functional	Increase in the number and type of project activities, new products, and services
Replication	Creating, incubating, or supporting new entrepreneurs; creating new affiliates; developing new branches; franchising
Institutional	Modification in public policy and regulations at national and international levels, transformation of existing institutions (regulative, normative, and cognitive)

Jolly et al., 2011

Upscaling in proGInreg

